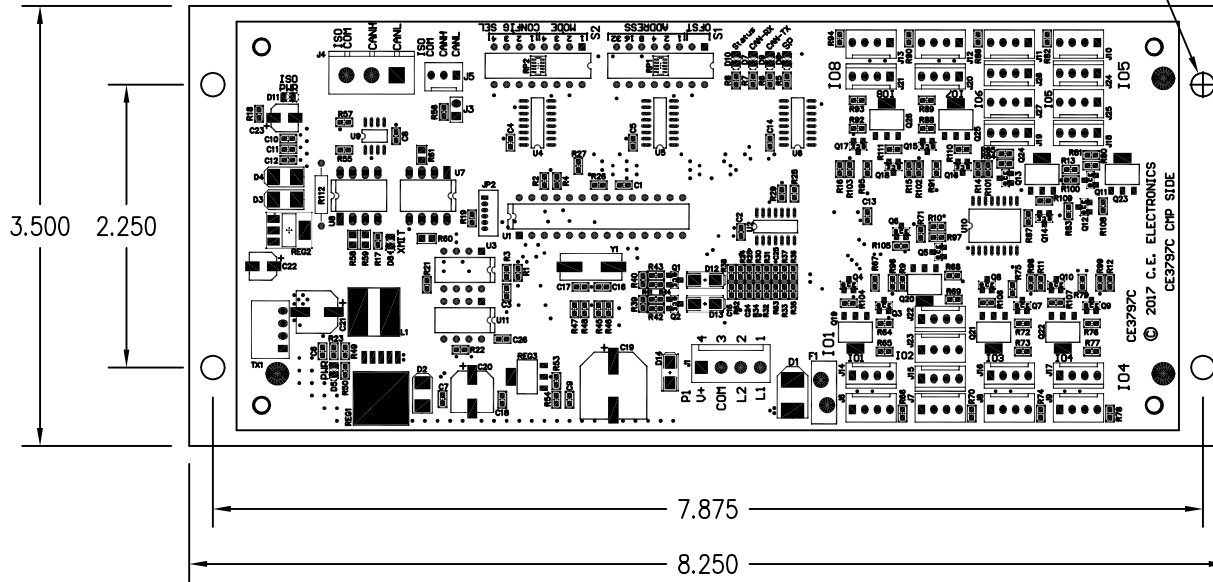




Controller Interface Board

This unit is the interface between the touchscreen and the Otis RSL. As the rider selects their car call on the screen, the CIB collects that information and sends it to the controller via RSL. The controller responds via RSL and communicates feed back to the touch screen. The car call is illuminated on screen to confirm the selection and then the controller sends the car to the floor.

ø3/16 HOLE
 4 PLACES



Typical Applications

- Touch screen to RSL interface

Features:

- This board also has 8 discrete I/O (24V) that also tie into the RSL that can be in parallel with the touch screen or as separate I/O.

TO ORDER: - CIB-O X X X X

NOTE:

1-3/4 MINIMUM REQUIRED DEPTH